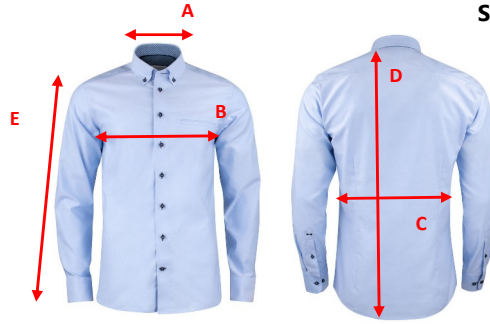




J. HARVEST & FROST
CORPORATE SHIRTMAKER

SIZE CHART



Brand: J. HARVEST & FROST

Style: 2912101 RED BOW 121 REGULAR

| | S | M | L | XL | XXL | 3XL | 4XL |
|------------------------------------|--------------|--------------|--------------|--------------|--------------|--------------|--------------|
| | 37/38 | 39/40 | 41/42 | 43/44 | 45/46 | 47/48 | 49/50 |
| A) neck | 38 | 40 | 42 | 44 | 46 | 48 | 50 |
| B) 1/2 chest width | 53 | 56 | 59 | 62 | 65 | 69 | 73 |
| C) 1/2 waist width | 51 | 54 | 57 | 60 | 63 | 67 | 71 |
| D) body length from shoulder point | 79 | 80,5 | 82 | 83,5 | 84 | 86 | 88 |
| E) sleeve length | 65 | 66 | 67 | 68 | 68 | 69 | 69 |

All measurements are indicative with minimum tolerance of 1 cm